



Sungai Way-Subang Methodist Church

# Sermon



**Go and Do Likewise**

**Luke 10:25-37**

**Pr Robin Liew**  
**3 April 2022**

---

**FAMILIARITY** is a magician  
that is cruel to beauty but  
kind to ugliness.

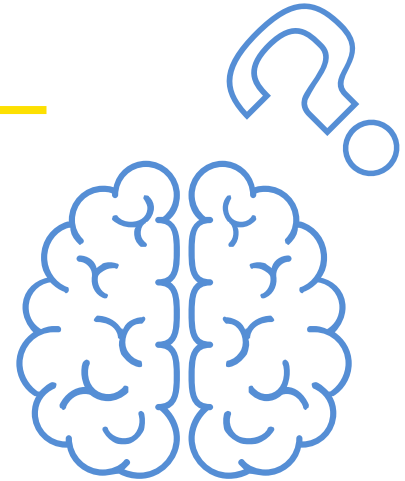
~ Quida

# QUESTION:

---

What must I do to inherit  
**eternal life** ?

Luke 10: 25-28



# Luke 10:25-28

---

25 On one occasion an expert in the law stood up to test Jesus. “Teacher,” he asked, “what must I do to inherit eternal life?”

26 “What is written in the Law?” He replied. “How do you read it?”

# WHAT IS ETERNAL LIFE ?

---

- Life after death (?)
- Jewish perspective
  - Fleeting life (*Chayei Sha'ah*)
  - Eternal life (*Chayei Olam*)

# Luke 10:25-28

---

27 He answered, “Love the Lord your God with all your heart and with all your soul and with all your strength and with all your mind; and, ‘Love your neighbor as yourself.’”

28 “You have answered correctly,” Jesus replied. “Do this and you will live.”

# Lesson #1

---

The deepest longing and desire of every human

**MEANING & PURPOSE, IDENTITY,  
RELATIONSHIP**

# Lesson #1

---

ETERNAL LIFE according to Jesus

- **Come to ME** to have life (John 5:39).
- **Be in relationship** with ME and my Father (John 17:3).

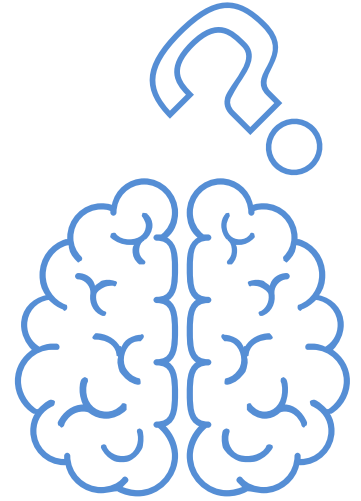


# QUESTION :

---

Who is my **neighbour** ?

Luke 10:29 - 35



# Luke 10:29-35

---

<sup>29</sup> But he wanted to justify himself, so he asked Jesus, “And who is my neighbor?”

<sup>30</sup> In reply Jesus said: “A man was going down from Jerusalem to Jericho, when he was attacked by robbers. They stripped him of his clothes, beat him and went away, leaving him half dead.

# Luke 10:29-35

---

<sup>31</sup> A **priest** happened to be going down the same road, and when he saw the man, he passed by on the other side. <sup>32</sup> So too, a **Levite**, when he came to the place and saw him, passed by on the other side. <sup>33</sup> But a **Samaritan**, as he traveled, came where the man was; and when he saw him, he took pity on him.

# Luke 10:29-35

---

<sup>34</sup> He went to him and bandaged his wounds, pouring on oil and wine. Then he put the man on his own donkey, brought him to an inn and took care of him. <sup>35</sup> The next day he took out two denarii and gave them to the innkeeper. ‘Look after him,’ he said, ‘and when I return, I will reimburse you for any extra expense you may have.’

# Luke 10:29-35

---

<sup>36</sup> “Which of these three do you think was a neighbor to the man who fell into the hands of robbers?”

<sup>37</sup> The expert in the law replied, “The one who had mercy on him.”

Jesus told him, **“Go and do likewise.”**

# Lesson #2

---

LOVE PEOPLE **matters** to God.

Eternal life **is**

LOVE GOD, LOVE PEOPLE.

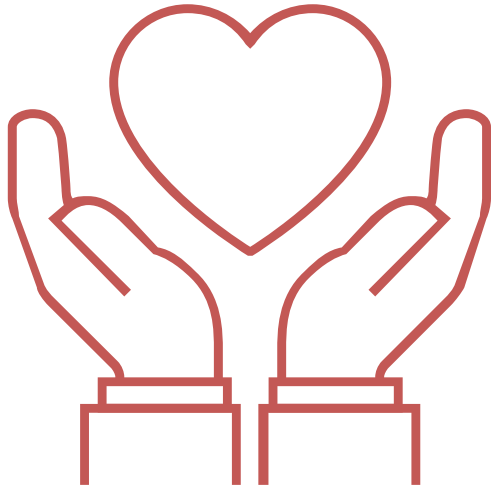
# Lesson #3

---

Don't just believe **IN** Jesus,  
But believe **LIKE** Jesus.

# INVITATION

---



*Love*  
*Love*  
*Make*

**GOD.**

**PEOPLE.**

**DISCIPLES.**